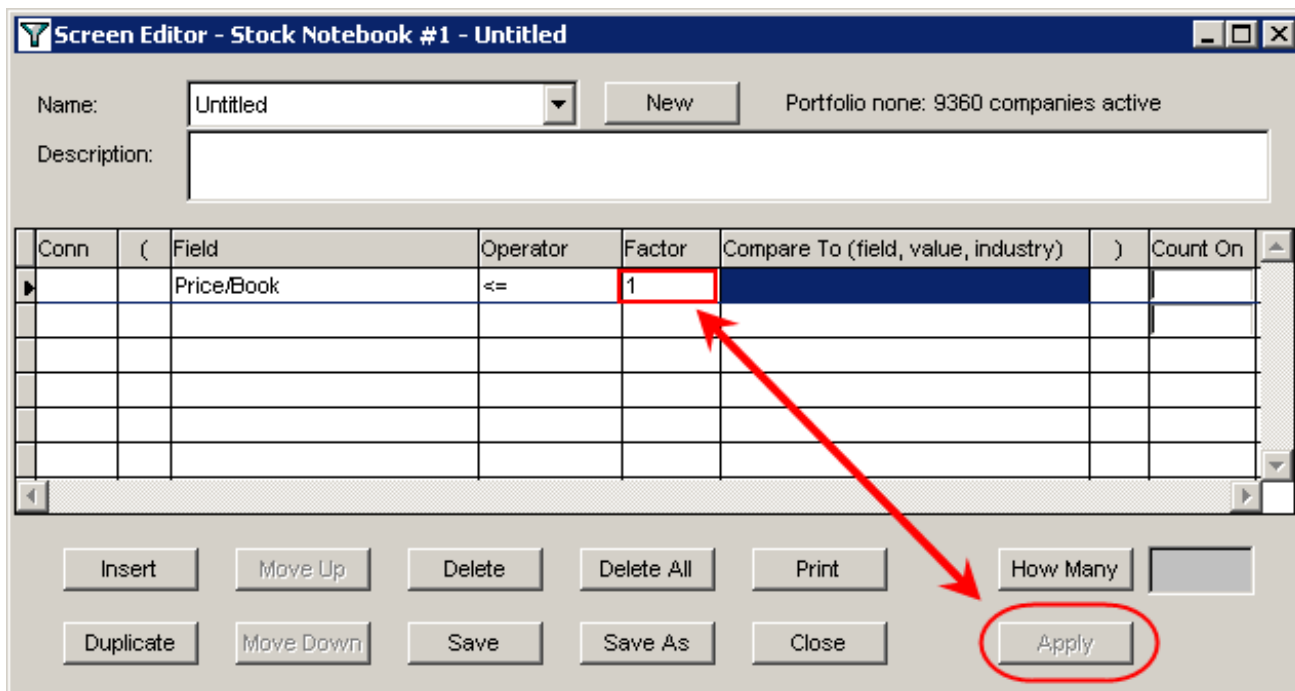


Why is the Apply button grayed out in the Screen Editor so that I cannot apply my screen

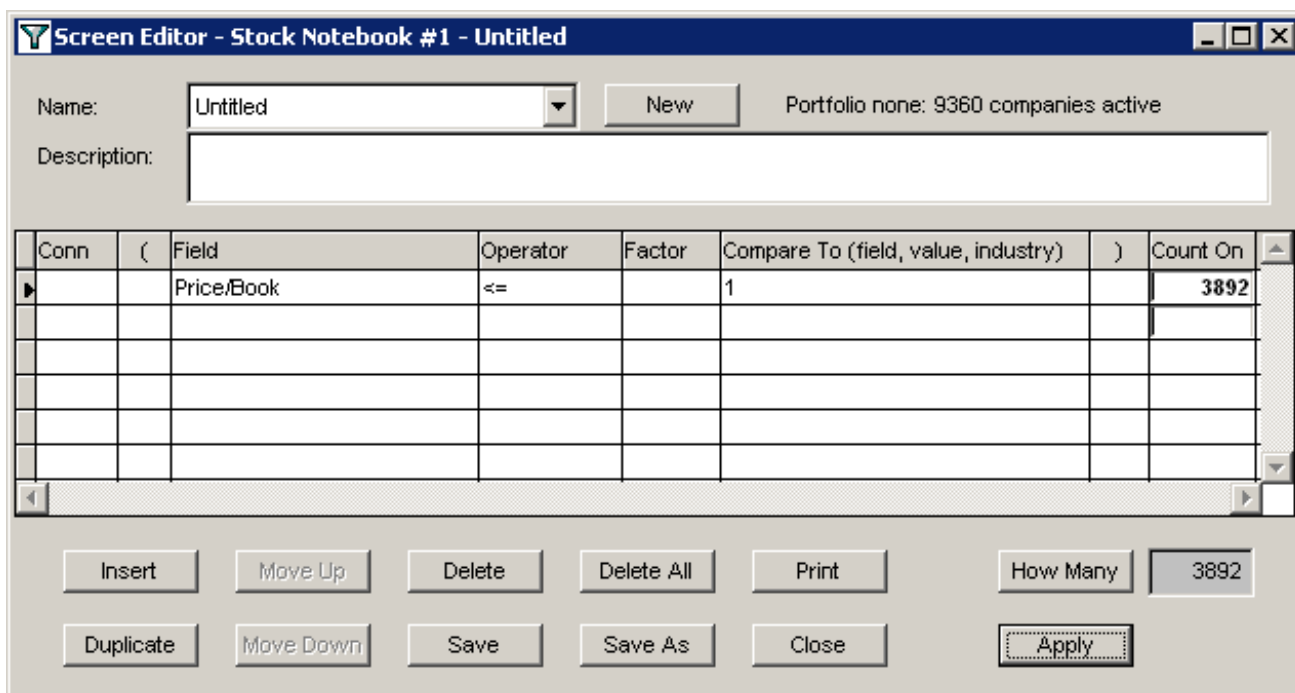
If you have entered criteria in the Screen Editor but cannot Apply the screen, it probably means that you have a number in the Factor column that belongs in the Compare To column.

Consider this example:



Here we are attempting to screen for companies with a price-to-book-value per share of less than or equal to 1. However, instead of placing the 1 in the "Compare To" cell where it belongs, we placed it in the "Factor" column. As a result, the Apply button is grayed out.

After moving the 1 to the "Compare To" cell, we are able to Apply the screen:



Canvas Wiki

Therefore, verify that you have a field name or number in the Compare To cell for each line of criteria in the screen.